

DON'T MISS...

The Long Island exhibit

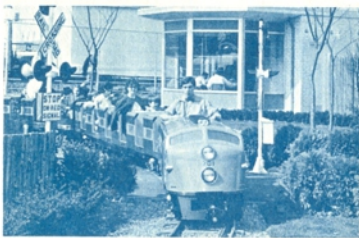
AT THE
WORLD'S FAIR
By THE **LONG ISLAND RAIL ROAD**



YOUR
STEEL THRUWAY
TO THE
FAIR GATEWAY



One thing you'll note about the Long Island exhibit is spaciousness ... and the beautiful landscaping by the Long Island Nurserymen's Association



In the midst of the World's Fair's chrome and glitter, the Long Island Rail Road has created a refreshing oasis in the form of an acre-sized slice of suburbia.

You'll enjoy the relaxing, informal country-fair kind of feeling about the Long Island exhibit. There are no waiting lines to sweat out and no admission fees to pay.

Our exhibit offers probably the only chance you'll ever have to watch Long Island ducklings actually hatch out right before your eyes. Nearby you'll see their big brothers and sisters swimming about in their own pond.

And where else can you climb into the cab of a real diesel locomotive--or make believe you're delivering a campaign speech from the rear platform of a real observation car--and be able to bring home pictures to prove it?

Under gaily colored canvas shelters you'll find the informative Court of the Four Counties (Brooklyn, Queens, Nassau and Suffolk)

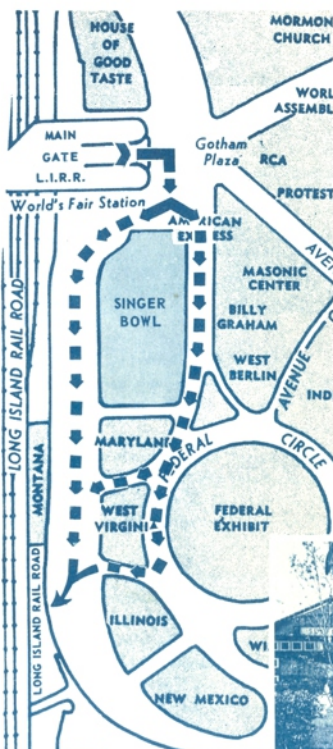
and a fascinating, 50-foot-long, carefully contoured relief map of the Island, complete from East River shore to an ever-blinking Montauk Lighthouse.

You can look over the shoulder of a real-life supervisor of train movements as, in his glass-enclosed signal tower, he dispatches trains in and out of our nearby World's Fair station.

Camera fans will find additional photo material in a picturesque, authentic scaled-down Long Island windmill. And, if you just want to rest and enjoy the trees, shrubs and flower beds in seasonal bloom, there's a warm welcome for you to make use of benches scattered throughout the exhibit area.

For a climax-capper, try a trip on our quarter-size (quarter fare, too) ride-'em railroad, which encircles the entire exhibit. It's a must for youngsters from four to four score.

See you at the exhibit!



LOOK FOR THE WINDMILL....

... a convenient, easy-to-find place to meet your friends and neighbors.

When you leave the World's Fair station and enter the Fair's main gate, bear right, passing the Singer Bowl. The Long Island exhibit is next to Montana and directly across Meridian Road from Illinois.



Watch for the Long Island exhibit as your LIRR train from Long Island or New York approaches the World's Fair station.