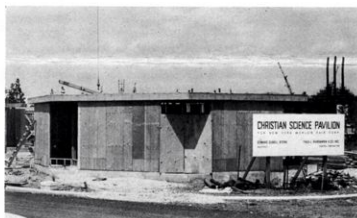
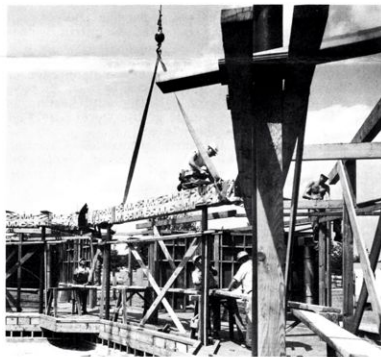


# Progress Report #3

ISSUED BY THE COMMITTEE FOR CHRISTIAN SCIENCE ACTIVITIES WORLD'S FAIR  
1964-1965, INC., SUITE 3213, 551 FIFTH AVENUE, NEW YORK 17. TEL. TN 7-2788

VOL. 1, No. 3

SEPTEMBER, 1963



*These photos of the Christian Science Pavilion taken August 15 show one section of the star-shaped Exhibit Building (left) and the Reading Room structure (above), both to be completed by mid-November. Being lowered into place atop steel columns is a laminated wood beam (wrapped in patterned shipping paper). The beams will support sky dome of aluminum and translucent glass to be installed in September. The plywood walls of both buildings will be finished outside in white stucco.*

## STRUCTURE NEARS COMPLETION

By Godfrey Sperling, Jr.

*Chief of the New York Bureau of The Christian Science Monitor*

Each day brings exciting new developments as the Christian Science Pavilion begins to take shape. Now the World's Fair officials have made an additional allotment of approximately 15,000 square feet of space for this presentation of Christian Science, enlarging the original site from 25,000 to some 40,000 square feet.

Construction moves along on schedule, with both the Exhibit and Christian Science Reading Room buildings due to reach the "closed-in" stage by September and completion by mid-November. The detailed task of interior design

will then follow. Target date for the fully completed Pavilion is late March. The Fair opens on April 22, 1964.

Of prime importance, of course, is the thoughtful consideration being given the Christian Science theme that will be developed in the several exhibits. Although this planning is still in the formative stage, it is now possible to state some of the objectives and criteria that are being set up as guidelines.

### Exhibits to Present Spiritual Message

The over-all task, as it is being envisioned, is to present an essen-

tially spiritual message to people largely unfamiliar with thinking in such terms.

The planners are trying to keep their view high. They feel that the appeal in the theme cannot be on "mere self-interest or the desire for material benefits." On the other hand there will be suitable emphasis on the practicality and the fruits of Christian Science.

The appeal will be to the spiritual yearnings of the viewer with the object of kindling his spiritual sense into a measure of response.

Although the precise message and motives for each exhibit are

*(Continued on page 4)*

## ONWARD STEPS REPORTED AT MEETING

Progress that has taken place at the Christian Science Pavilion site and throughout the Field was reported at afternoon workshop and evening inspirational meetings at Fifth Church in New York City on June 6, 1963.

Spokesmen for the Executive Committee for Christian Science Activities at the World's Fair, and representatives of state committees and branch churches east of the Mississippi River, shared ideas and information at the evening session with the more than 1,000 who attended.

After introductory remarks by Ralph Camargo, master of ceremonies and a member of the program committee, and inspirational readings by Mrs. Muriel N. Holland, C.S.B., a member of the executive committee, the keynote of the meeting was set by Hobson F. Miller, chairman of the executive committee. Mr. Miller called attention to the opportunity we will have to present to Fairgoers "a higher and more practical Christianity" which "stands at the door of this age, knocking for admission" (Science and Health, page 224).

The door is being opened right now, he said, by the work earnest Christian Scientists are doing and the contributions they are making to our activities at the Fair.

### Guidance Evident

Instances of demonstration in connection with construction were shared by Herman J. Schmidt, a member of the executive committee.

When the site was selected, he said, it was not possible to determine the conditions below the ground surface. Much of Flushing Meadows is marshy, with pilings required to support a structure. Subsequent tests revealed a solid subsoil with no pilings needed . . . which meant a substantial saving in cost.

When the architect's plans were submitted, it was realized that one important aspect of the Pavilion's beauty would be missed unless it could be seen from above. "As plans have developed we have witnessed the operation of the one Mind," Mr. Schmidt said. "A terminal of the Swiss aerial cable car ride will be almost directly in front

of our Pavilion. Thus the estimated 50,000 people a day who use the skyride will see our building from the air and be deposited almost at our entrance."

### Spiritual Import of Fair Theme

The themes of the World's Fair . . . Peace Through Understanding and Man's Achievements in an Expanding Universe . . . could well be translated by the metaphysician into the most scientific reasoning, stated Gilbert A. Robinson, general manager of the Christian Science Pavilion.

"Peace comes about through the understanding that the universe is spiritual and not material, and man's achievements in an expanding universe are really to demonstrate this fact," he said.

Among the other speakers on the program was George T. Sweetser, a member of the executive committee, who spoke of exhibit plans. J. Burwell Harrison, who reported as chairman of the finance committee, stressed among other points the fact that contributions for the World's Fair Fund should be in addition to, not in lieu of, other church giving. H. Victor Grohmann told of the activities and plans of the communications committee, of which he is chairman, and Bruce Payne, chairman of the personnel committee, outlined the needs for staffing the Pavilion, (reported more fully on page 4).

### Giving Does Not Impoverish

Reports from the Field offered proof of God's ever-abundant supply available to meet all needs. In them were mentioned the blessings that have returned to the churches that have taken steps to participate in the World's Fair exhibit.

Several speakers stated that requests for donations to the Fair project have not depleted the amount given to other funds.

One church building fund increased five times after members listened to the tape-recording concerning our World's Fair activities, making it possible for the church to spend \$7,500 to purchase a lot adjacent to its present structure.

A society in Alabama has tripled its monthly per member donation.

A Florida church which could not help financially appointed a

representative when the state chairman wrote them that the "metaphysical work of one good Scientist in a small group is as effective as the metaphysical work of one Scientist in a large group."

Adding another activity was a spiritual challenge to many a church budget, reported one state committee representative, "but the love and the gratitude of the members proved once again that there is always a sufficiency to meet the demand."

### More Expansive Outlook

Support of the Christian Science exhibit "has given the Middle West a larger, more expansive outlook on the world-wide mission of Christian Science to bring its message of salvation and healing to the people of the world," another speaker stated.

Informal groups of Christian Scientists are giving beyond the suggested fifteen cents per member per month. In so doing, their desire is to keep their activities abreast of the times, including their contributions to this project with its world-wide import.

An eight-year-old Sunday School boy discovering the Fair contribution envelopes took a penny from his pocket and put it in an envelope.

Many churches have made their contributions retroactive to the start of the campaign.

Regional meetings are proving to be successful. Slides depicting the various buildings at the Fair and the explanations of the need for adequate funds have been shown in many churches.

Said one state representative, "Each of us in our own individual experience has had the joy of realizing and demonstrating God's bounty and limitless good. Can there be any doubt at all that the need for our exhibit will also be promptly and abundantly met?"

Speakers who shared this fruitage from the Field were Douglas Rider who reported for New York, New Jersey and Pennsylvania; Walter Belau who read the report of Robert Wentzel covering Wisconsin, Michigan and Illinois; Miss Harriet Casto speaking for Ohio, Kentucky, West Virginia and Indiana; John Holbrook representing the New England states; and Eugene Skarie who spoke for the southern states.

## REPORT FROM THE COMMITTEE ON FINANCE AND FIELD SUPPORT

We are grateful for the growing support our World's Fair exhibit is receiving from the Field. Contributions of all sizes from churches and individuals are increasing. It is evident that Christian Scientists are gaining an inspired perspective of this world-embracing activity.

Though funds are not yet on hand to meet all financial commitments through the end of the year, the generosity of churches and individuals has made it possible to pay promptly all of our obligations up to the present time.

Many will remember the unifying effect for the whole Cause when the decision to build a new home for the Publishing Society was announced. Now, as then, broadening our outlook to forward this world-wide activity of our movement will bring unity and blessing.

The Christian Science Board of Directors has written our Committee of its confidence "that the churches and societies east of the Mississippi River . . . will give metaphysical and financial support to insure the success of this project."

The Directors also have approved our solicitation of interested individuals everywhere. This is bringing wide response. A contribution from a church member in England was received with a note saying it was his understanding that expenses were to be met by churches "east of the Mississippi River, for which of course we qualify!"

### New Appointments

J. Burwell Harrison, a member of First Church of Christ, Scientist, Princeton, New Jersey, and formerly chairman of the Finance Committee for Christian Science Activities at the World's Fair, has been appointed to the Executive Committee. Mr Harrison replaces Mr. William Henry Alton, C.S.B., whose appointment to The Christian Science Board of Lectureship necessitates his withdrawal from the Executive Committee.

Jules Leni, a member of Second Church of Christ, Scientist, New York City, has been appointed chairman of the newly named Committee on Finance and Field

### Prayerful Support

Support of our World's Fair activity is not thought of in terms of monetary contributions alone. It is seen also in the expressions of vision and gratitude that accompany even the smallest donations. It is the spiritual power of prayer that will attract to our Pavilion those whose mental doors are open . . . and that will open mental doors now closed.

"Where there is no vision the people perish" (Prov. 29:18). Vision gives life to an idea. Ideas are analogous to plants in a garden: they must grow from within; growth cannot be imposed from without.

Many churches and societies east of the Mississippi have appointed World's Fair representatives to help channel information about the Christian Science Pavilion and its purpose to the congregations. As a result, the vision of what our World's Fair activity can mean is growing within these congregations.

### Tools for Church Representatives

Our Committee furnishes the representatives with working tools and materials through state committees in 26 states and the District of Columbia. These include a slide presentation that tells the story of our exhibit in vivid terms; pictorial material for bulletin boards, contribution envelopes for

pew racks, and self-addressed stamped envelopes for individual contributions.

Fruitage of this work has been reported from many areas. The representative of a branch church in Pennsylvania wrote that their members have increased the amount of their World's Fair contributions without transferring funds from other essential needs of the church.

"This is a direct reversal of what has happened in the past," she stated. "And this larger sense of giving has appeared in our general collection since contributions to the World's Fair activities were started. For the first time in many years, general contributions have been sufficient each month to cover church expenses. In the past the general fund has dropped when there were extra calls for non-recurring expenses. But the opposite is now the case . . ."

"We are grateful for this healing which has broken a long-standing mesmerism and released a wider sense of the possibilities of our Fair activities."

We appreciate the reports of fruitage from individuals and churches. We are grateful for the vision, enthusiasm and love expressed toward this project.

"In every thing by prayer and supplication with thanksgiving let your requests be made known unto God" (Phil. 4:6).

TO: Christian Science at the New York World's Fair  
Suite 3213, 551 Fifth Avenue, New York 17, N.Y.

- My contribution for the Christian Science Pavilion at the Fair is enclosed.
- Please forward a self-addressed contribution envelope to me at the following address the first of each month:

(Name) \_\_\_\_\_

(Address) \_\_\_\_\_

Checks may be made payable to "Christian Science at the World's Fair." Should there be surplus funds after all bills are paid, they will be turned over to the Treasurer of The Mother Church, The First Church of Christ, Scientist, in Boston, Massachusetts.

## VOLUNTEERS TO SERVE AT PAVILION

"Choosing the right individuals to work at this pavilion will be essential in order to properly fulfill the objectives of our exhibit," Bruce Payne, personnel chairman, pointed out at the June 6 meeting in Fifth Church of Christ, Scientist, New York City.

The Pavilion, which will be open twelve hours a day, seven days a week, will require up to fifty persons every day for six months during both 1964 and 1965. They will serve without pay. At least one practitioner will be on duty at

the Pavilion each day.

The image we present to the more than 3,000,000 visitors to our exhibit, coming from all over the world, will largely depend on the effectiveness of our workers. The planning and training of the staff will be most important. Individuals proficient in one or more foreign languages will be needed.

Regulations placed on personnel by the World's Fair may require a volunteer to work for two months on a full-time basis while another individual may contribute the equivalent time over the six-month periods of the Fair.

Application forms may be ob-

tained by writing the Christian Science World's Fair office at 551 Fifth Avenue, New York, New York. Qualified Christian Scientists may make application at this office. College organizations are urged to have their members serve.

Interviews with applicants will begin this fall. The opportunity to tell the story of Christian Science through our World's Fair exhibit is a tremendous one. In the words of our Master, we can say, "The harvest truly is plenteous, but the labourers are few; pray ye therefore the Lord of the harvest, that he will send forth labourers into his harvest" (Matt. 9:37, 38).

### Reductions Offered on Advance Ticket Orders

Between now and next February 29, special prices for entrance tickets to the Fair, valid in both 1964 and 1965, are being offered.

Regular ticket price after February 29 will be \$2 each for adults and \$1 each for children. There are several special offers prior to February 29.

Seven adult tickets, each of which may be exchanged at the Fair for two children's tickets, may be purchased under this advance plan for \$10.10. This plan also includes a certificate redeemable for an Official Fair Guide.

Bulk orders of 50 or more tickets are also available until February 29 at \$1.35 for each adult ticket, and 67½ cents for each child's ticket.

Individual adult tickets (not purchased in bulk) may be had for \$1.80 each, and children's tickets for 90 cents each.

### Write for Tickets to World's Fair Corporation

For further information, or for ticket orders, please write: Erwin Witt, Comptroller, World's Fair 1964-65 Corporation, P.O. Box 1964, Flushing 52, New York.

### Drawings of Pavilion Displayed

Architectural renderings of the Christian Science Pavilion were displayed this summer at the Time and Life Exhibition Center in New York City, and in several stores at Asbury Park, New Jersey, where the sketches of our Pavilion have been viewed by hundreds of thousands of visitors.

### NEW FUND IDEA

Have you heard of an EXPECTED GOOD FROM UNEXPECTED SOURCES FUND for World's Fair contributions?

The idea for such a fund first came from a Greater Boston church which each year sends its members an envelope so labeled. The member uses it for monies received as "windfalls" . . . such as taxi fare saved when a friend offers an unexpected ride.

Massachusetts chairman John Holbrook told his dinner guests one night about this plan, and by dessert time found himself with \$40.12 for the World's Fair Fund!

**Structure** (Continued from page 1)  
still being worked out, it is possible to disclose some of the preliminary thinking that is shaping the suggestions and working outlines.

### New View for Visitor

"We propose," says Hobson F. Miller, chairman of the executive committee for the Christian Science Activities at the Fair, "to put before our visitor a point of view that is new to him. Since this particular message or point of view — this new way of thinking and living with its practical fruits — will challenge many of our visitor's most deeply held convictions, we may as well start by frankly inviting him to explore a new and challenging approach to his deepest questions about life.

"We need to say to him in effect: What we have to offer you is a new way of thinking about who you are, your goal in life, your health, your relations with others. Let's explore your deepest questions about man and God — explore them from a new point of view.

"This means we are inviting our visitor to take a fresh look at his

universe, his world, himself, his questions about religion. We are inviting him on a journey into a new world — a journey 'into the land of Christian Science, where fetters fall and the rights of man are fully known and acknowledged'" (Science & Health, p. 227).

### Quietness in Pavilion

In terms of the atmosphere inside the Pavilion, this criterion was suggested: "We want to create a feeling of quietness, seriousness, thoughtfulness, a certain sense of awe before eternal questions . . . inviting but not pushing, persuasive but without any hint of forcing conclusions."

Exhibit devices, by which the message will be presented, will need to be ingenious and original: "They might include, for example, color film, animation, music, voices, portrayal of everyday people on the screen, use of the printed word, slides, or some combination of these or many other audio-visual methods designed to attract the eye and ear of the visitor and lead him into the exhibit."